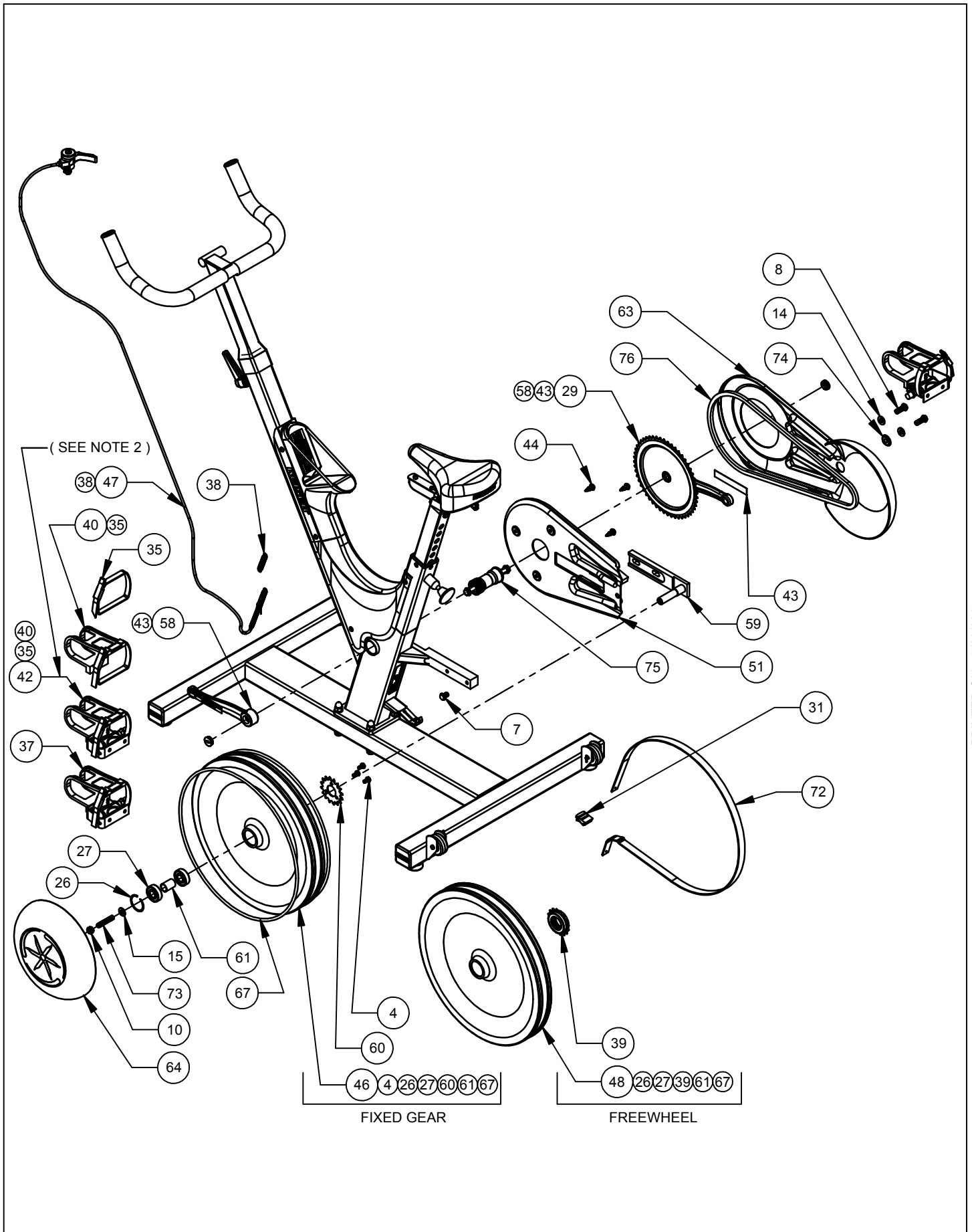


PRINTED ON: 7/30/2004

X:\drawings\\_APPROVED\64\_RWD\_BIKE\

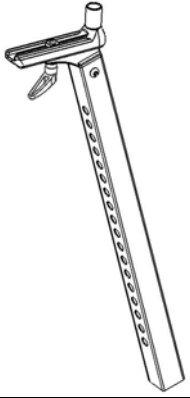
MODEL #:	<b>5421S &amp; 5461S</b>	TITLE:	<b>SA - RWD BIKE-FIXED GEAR &amp; FREEWHEEL</b>
FROM SERIAL NUMBER:	<b>5400013323</b>	TO:	<b>5400036900</b>
DATE FROM:	<b>8/24/01</b>	TO:	<b>1/5/04</b>



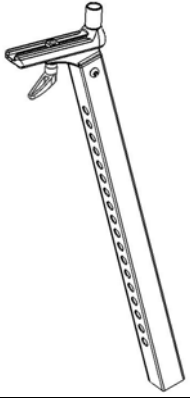
PRINTED ON: 7/30/2004

X:\drawings\\_APPROVED\64\_RWD\_BIKE\

MODEL #:	<b>5421S &amp; 5461S</b>	TITLE:	<b>SA - RWD BIKE-FIXED GEAR &amp; FREEWHEEL</b>				
FROM SERIAL NUMBER:	<b>5400013323</b>	TO:	<b>5400036900</b>	DATE FROM:	<b>8/24/01</b>	TO:	<b>1/5/04</b>

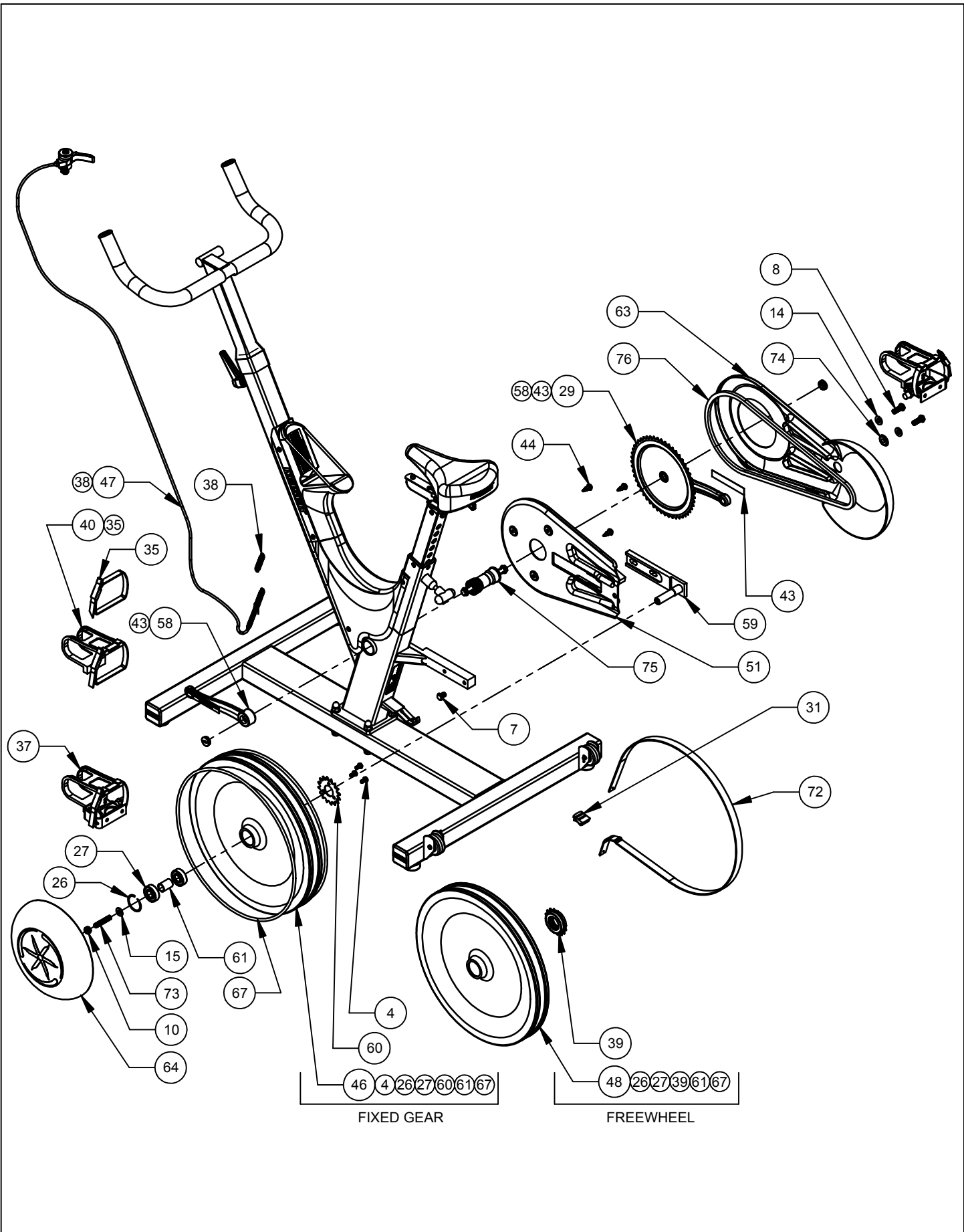


ITEM 80  
REPLACES ITEMS  
30, 49, 50, 52, 55

 <p>ITEM 80 REPLACES ITEMS 30, 49, 50, 52, 55</p>	



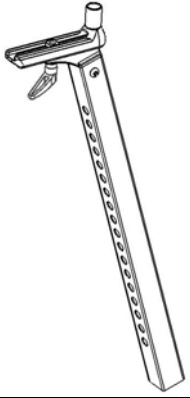




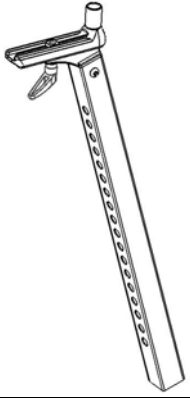
PRINTED ON: 7/30/2004

X:\drawings\\_APPROVED\64\_RWD\_BIKE\

MODEL #:	<b>5421S &amp; 5461S</b>	TITLE:	<b>SA - RWD BIKE-FIXED GEAR &amp; FREEWHEEL</b>				
FROM SERIAL NUMBER:	<b>5400036901</b>	TO:	<b>5400040744</b>	DATE FROM:	<b>1/5/04</b>	TO:	<b>2/12/04</b>



ITEM 80  
REPLACES ITEMS  
30, 49, 50, 52, 55

 <p>ITEM 80 REPLACES ITEMS 30, 49, 50, 52, 55</p>	

ITEM NO.	PART NO.	TITLE	ITEM NO.	PART NO.	TITLE
1	9007	COTTER PIN 3/32 X 1/2 ZP	60	542020	COG - 16T
2	9017	CLEVIS PIN 1/4 X 1-1/2 ZP	61	543080	SPACER - BEARING-FLYWHEEL
3	9035	SCREW - SHCS 1/4-20 X 3/4 SS	62	545002	SLUG - HANDLEBAR ADJ BR
4	9150	SCREW - HHCS 1/4-20 X 1/2 ZP	63	545051	COVER - CHAIN-OUTER
5	9175	SCREW - HHCS 5/16-18 X 3/4 ZP	64	545052	COVER - FLYWHEEL
6	9178	SCREW - HHCS 5/16-18 X 2 GR5 ZP	65	545054	COVER - MAIN FRAME-LOWER
7	9199	SCREW - HHCS 3/8-16 X 1/2 ZP	66	545055	ANCHOR - CABLE PL
8	9201	SCREW - HHCS 3/8-16 X 1 ZP	67	545057	O-RING - FLYWHEEL
9	9226	NUT - HELN 5/16-18 ZP	68	545058	PIN - MAIN FRAME-Ø1/4 X 2-1/8
10	9227	NUT - HRLN 3/8-16 ZP	69	545059	O-RING - BOTTLE HOLDER-UPPER COVER
11	9229	NUT - HELN M8 X 1.25 ZP	70	545400	SADDLE
12	9253	SCREW - CRPHMS #10-32 X 3/16 SS	71	545402	HANDLE STUD ASSY
13	9265	SCREW - CRFCSHMS 1/4-20 X 3/4 SS	72	545404	FRICTION BELT
14	9346	WASHER - FW SAE L9 3/8 ZP	73	545407	STUD - 3/8-16 X 2 GR5 ZP
15	9358	WASHER - FW SAE 3/8 ZP	74	545408	WASHER - HAT 3/8 ZP
16	9384	WASHER - FW ACFT 7/16 SS	75	545417	BOTTOM BRACKET
17	9385	SCREW - HHCS 7/16-20 X 3 GR5 SS	76	545419	SP - 90 LINK CHAIN-LUBED
18	9386	NUT - HAN-HC 7/16-20 SS	77	545500	ADHESIVE PAD - BASE FRAME (SEE NOTE 3)
19	105423	BUMPER - MOLDED GLIDE	78	605051	PLUG - GRIP
20	105443	DECAL - SERIAL NUMBER	79	555059	KNOB - T-BLACK
21	105550	THREAD SEALANT - LOCTITE 242	80	540830	SA - SEATPOST (SEE NOTE 1)
22	112244	THREADED INSERT - 5/8 X 3/8			
23	115054	PLUG - 2 IN SQ KEISER PL			
24	172180	PLUNGER			
25	175500	SPRING - PLUNGER			
26	215502	RETAINING RING - 1.70 OD			
27	225400	BEARING - 6203 SHIELDED			
28	500801	ASSY - HANDLEBAR			
29	500828	ASSY - CRANK ARM SET			
30	540824	SA - SEATPOST-ADJ (SEE NOTE 1)			(1) REPLACE ITEMS 30, 49, 50, 52, 55 WITH ITEM 80
31	505050	BUCKLE - FRICTION BELT			(2) REPLACES ORIGINAL PEDAL
32	505058	WHEEL - 2 IN			
33	505063	PIN - HANDLEBAR-Ø1/4 X 1-3/4			(3) NO LONGER USED
34	505068	BUSHING - 4 PIECE			
35	505173	STRAP - PEDAL			
36	505302	DECAL - WARNING-UPPER COVER			
37	540831	PEDAL SET - COMBO (SEE NOTE 2)			
38	505408	SPRING - EXT-FRICTION BELT			
39	505417	SPROCKET - 16T FREEWHEEL			
40	505444	TOE CLIP AND STRAP ASSY			
41	505458	PAPER CLIP - JUMBO			
42					
43	505473	DECAL - CAUTION-PEDAL TORQUE			
44	505480	RIVET - Ø1/4 X 3/4 REMOVABLE PL			
45	505495	WASHER - NYLON			
46	540800	ASSY - FLYWHEEL			
47	540803	ASSY - SHIFT CABLE			
48	540804	ASSY - FLYWHEEL-FREEWHEEL			
49	540824	SA - SEATPOST-ADJ (SEE NOTE 1)			
50	540824	SA - SEATPOST-ADJ (SEE NOTE 1)			
51	540809	SA - ICC & VIBRATION DAMPENER			
52	540824	SA - SEATPOST-ADJ (SEE NOTE 1)			
53	540815	ASSY - BASE FRAME			
54	540816	ASSY - LOOSE PARTS PACK-5421			
55	540825	SA - QUICK RELEASE (SEE NOTE 1)			
56	540826	SA - MAIN FRAME			
57	540827	SA - COVER-UPPER			
58	540829	SA - CRANK ARM-LH			
59	540903	WELDT - AXLE MOUNT			

NOTES:  
FOR ADDITIONAL INFORMATION CONTACT  
THE KEISER SERVICE DEPARTMENT AT:  
1-800-888-7009 OR 1-559-256-8000

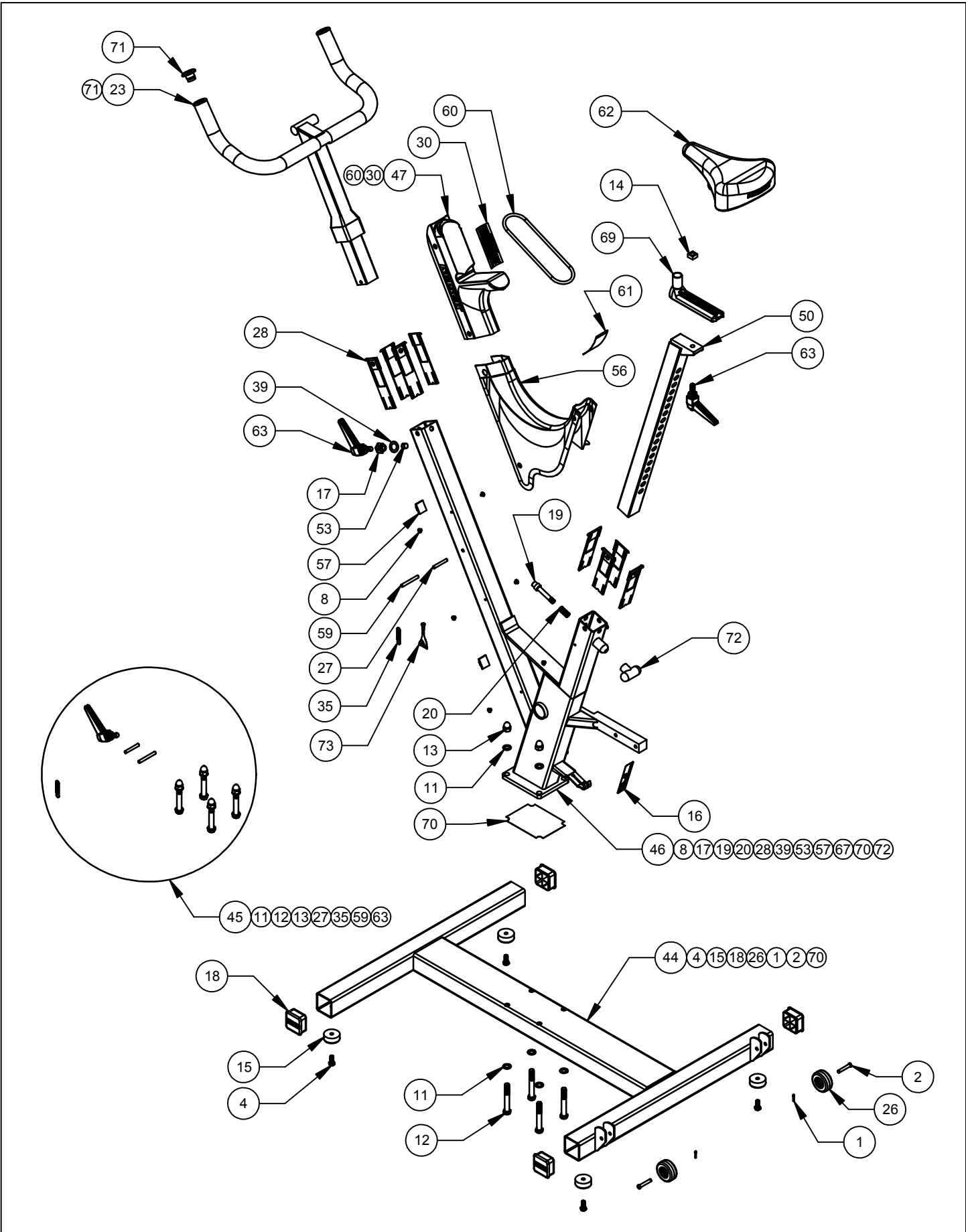
(1) REPLACE ITEMS 30, 49, 50, 52, 55 WITH ITEM 80

(2) REPLACES ORIGINAL PEDAL

(3) NO LONGER USED

PRINTED ON: 9/6/2007

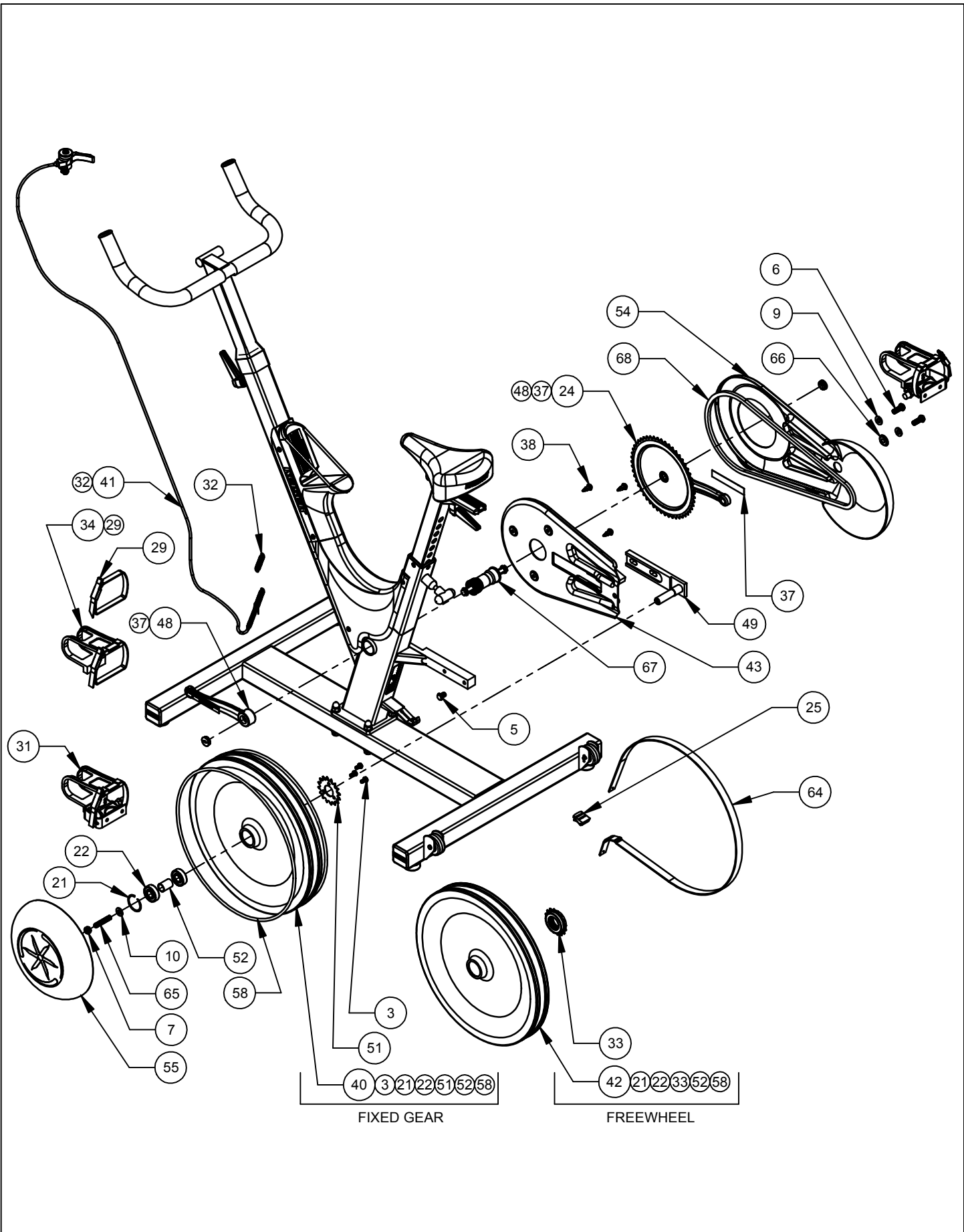




PRINTED ON: 7/30/2004

X:\drawings\REVISION\54\_RWD\_BIKE

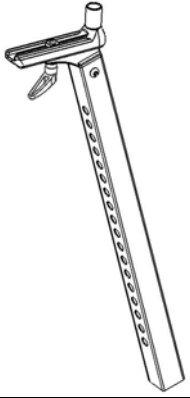
MODEL #:	<b>5421S &amp; 5461S</b>	TITLE:	<b>SA - RWD BIKE-FIXED GEAR &amp; FREEWHEEL</b>
FROM SERIAL NUMBER:	<b>5400040745</b>	TO:	<b>5400041354</b>
DATE FROM:	<b>2/12/04</b>	TO:	<b>3/3/04</b>



PRINTED ON: 7/30/2004

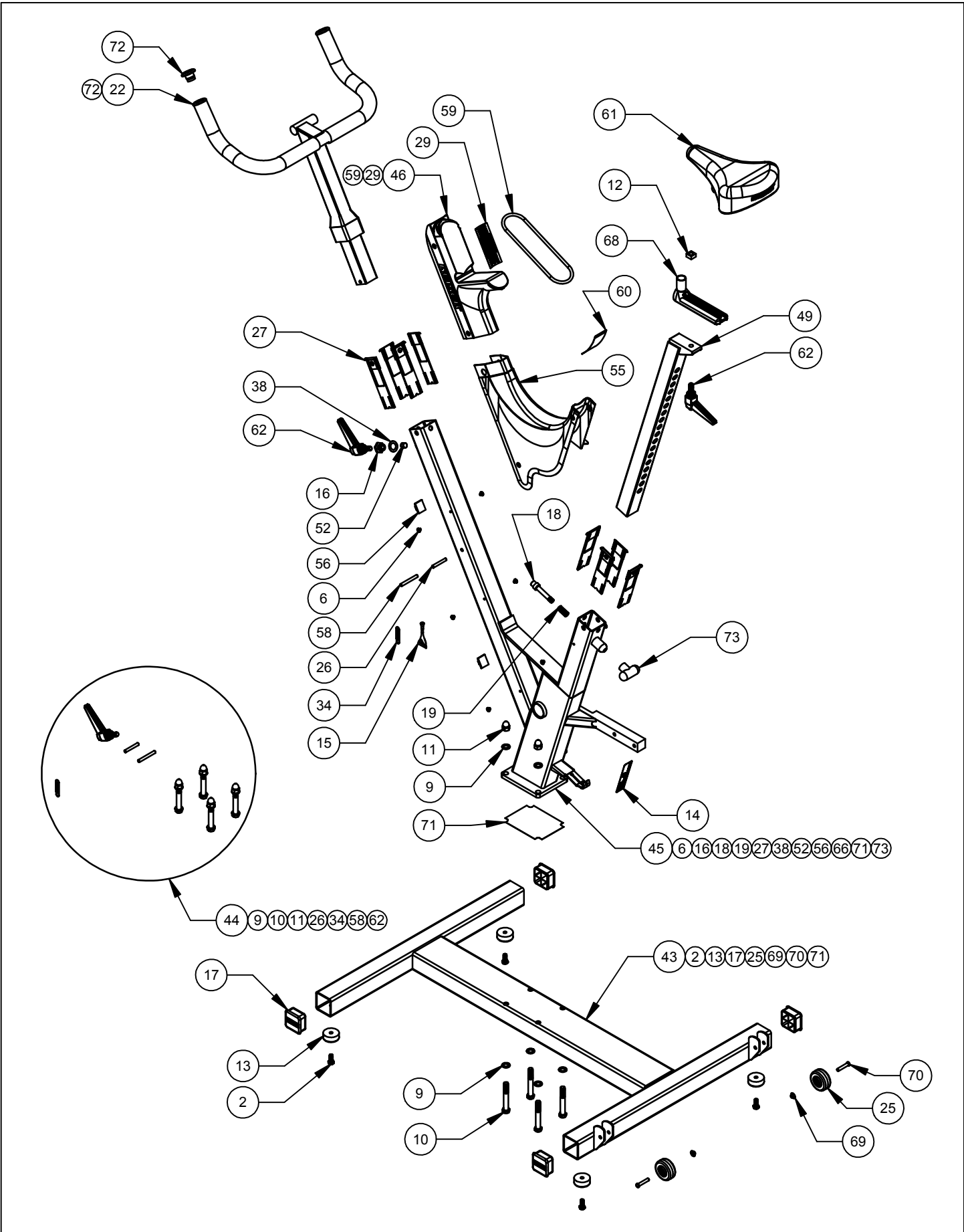
X:\drawings\\_REVISION\54\\_RWD\\_BIKE\

MODEL #:	<b>5421S &amp; 5461S</b>	TITLE:	<b>SA - RWD BIKE-FIXED GEAR &amp; FREEWHEEL</b>
FROM SERIAL NUMBER:	<b>5400040745</b>	TO:	<b>5400041354</b>
		DATE FROM:	<b>2/12/04</b>
		TO:	<b>3/3/04</b>



ITEM 74  
REPLACES ITEMS  
50, 69

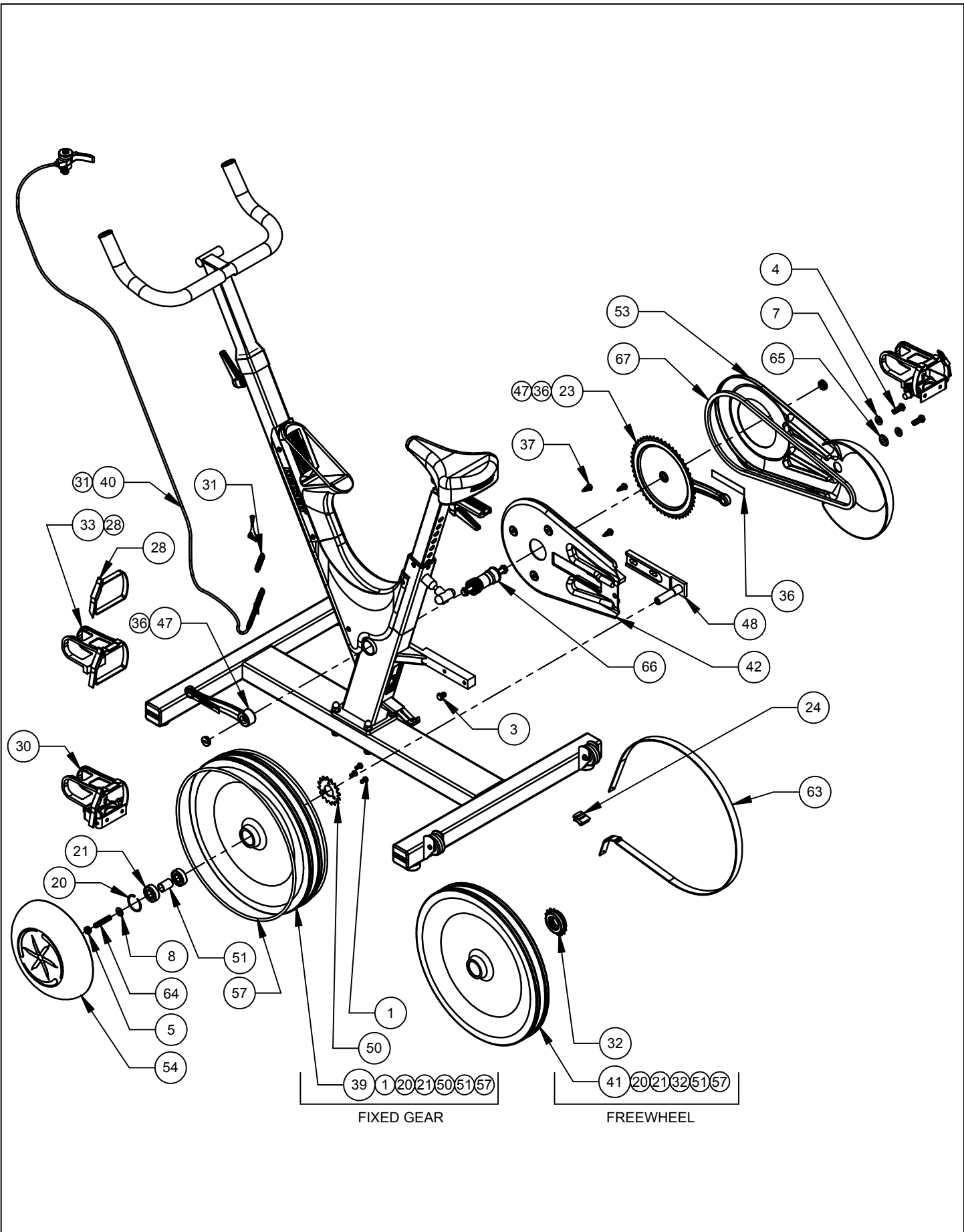




PRINTED ON: 7/30/2004

X:\drawings\REVISION\54\_RWD\_BIKE\

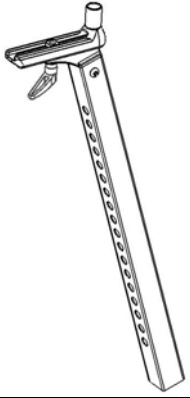
MODEL #:	<b>5421S &amp; 5461S</b>	TITLE:	<b>SA - RWD BIKE-FIXED GEAR &amp; FREEWHEEL</b>
FROM SERIAL NUMBER:	<b>5400041355</b>	DATE FROM:	<b>3/3/04</b>
TO:		TO:	___/___/___



PRINTED ON: 7/30/2004

X:\drawings\\_REVISION\54\\_RWD\\_BIKE\

MODEL #:	<b>5421S &amp; 5461S</b>	TITLE: <b>SA - RWD BIKE-FIXED GEAR &amp; FREEWHEEL</b>
FROM SERIAL NUMBER:	<b>5400041355</b>	DATE FROM: <b>3/3/04</b>
TO:		TO: <u>  </u> / <u>  </u> / <u>  </u>



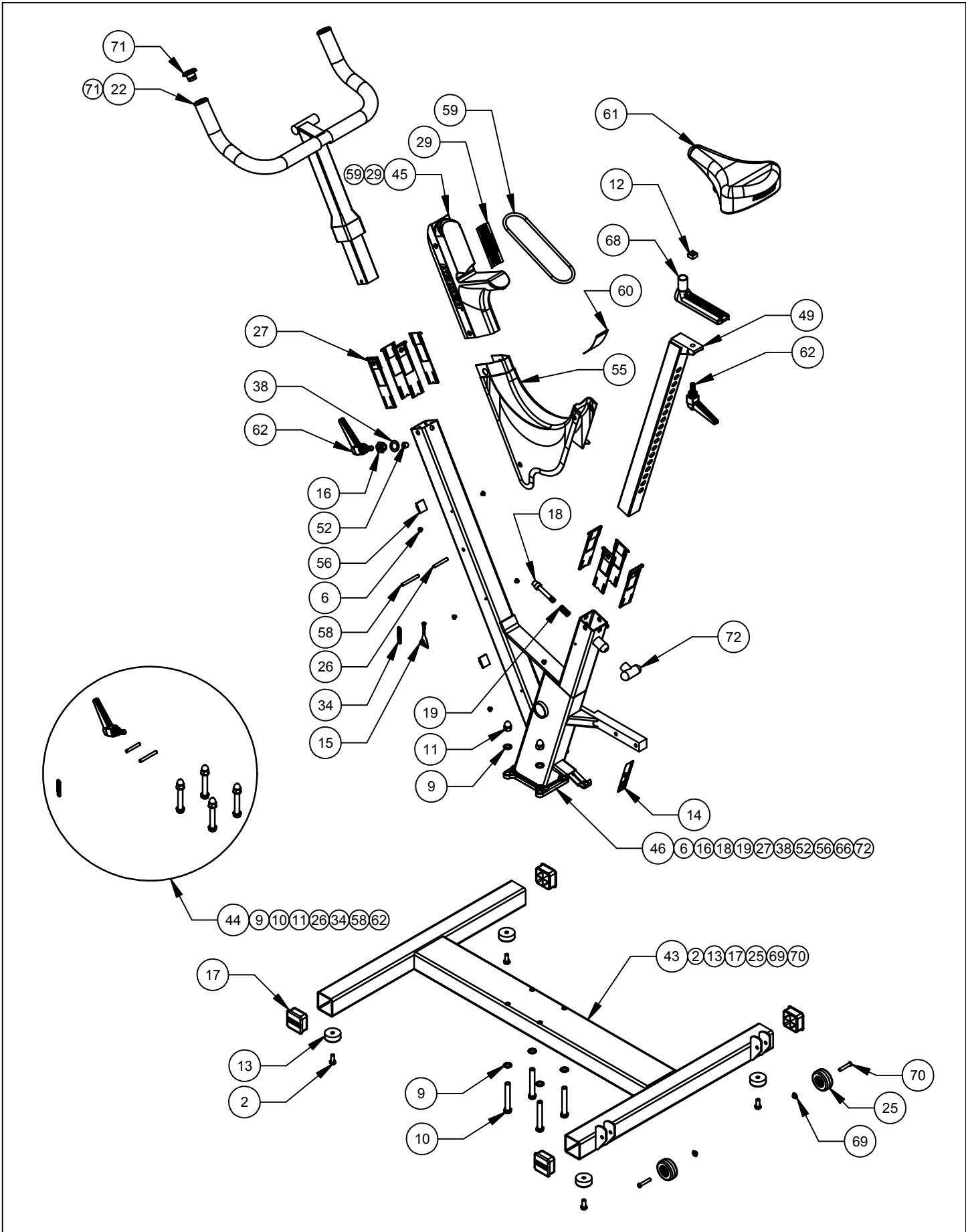
ITEM 74  
REPLACES ITEMS  
49, 68


ITEM NO.	PART NO.	TITLE	ITEM NO.	PART NO.	TITLE
1	9150	SCREW - HHCS 1/4-20 X 1/2 ZP	60	545301	DECAL - WARNING
2	9175	SCREW - HHCS 5/16-18 X 3/4 ZP	61	545400	SADDLE
3	9199	SCREW - HHCS 3/8-16 X 1/2 ZP	62	545402	HANDLE STUD ASSY
4	9201	SCREW - HHCS 3/8-16 X 1 ZP	63	545404	FRICTION BELT
5	9227	NUT - HRLN 3/8-16 ZP	64	545407	STUD - 3/8-16 X 2 GR5 ZP
6	9253	SCREW - CRPHMS #10-32 X 3/16 SS	65	545408	WASHER - HAT 3/8 ZP
7	9346	WASHER - FW SAE L9 3/8 ZP	66	545417	BOTTOM BRACKET
8	9358	WASHER - FW SAE 3/8 ZP	67	545419	SP - 90 LINK CHAIN-LUBED
9	9384	WASHER - FW ACFT 7/16 SS	68	555009	SLIDER - SEAT (SEE NOTE 2)
10	9385	SCREW - HHCS 7/16-20 X 3 GR5 SS	69	545424	PUSHNUT - 1/4 DIA
11	9386	NUT - HAN-HC 7/16-20 SS	70	545425	CLEVIS PIN - 1/4 X 1-3/8-NO HOLE
12	9982	NUT - HEAVY SQ. 3/8 - 16 SS	71	545500	ADHESIVE PAD - BA SE FRAME (SEE NOTE 1)
13	105423	BUMPER - MOLDED GLIDE	72	605051	PLUG - GRIP
14	105443	DECAL - SERIAL NUMBER	73	555059	KNOB - T-BLACK
15	105550	THREAD SEALANT - LOCTITE 242	74	540830	SA - SEA TPOST (SEE NOTE 2)
16	112244	THREADED INSERT - 5/8 X 3/8			
17	115054	PLUG - 2 IN SQ KEISER PL			
18	172180	PLUNGER			
19	175500	SPRING - PLUNGER			
20	215502	RETAINING RING - 1.70 OD		NOTES:	FOR ADDITIONAL INFORMATION CONTACT
21	225400	BEARING - 6203 SHIELDED			THE KEISER SERVICE DEPARTMENT AT:
22	500801	ASSY - HANDLEBAR			1-800-888-7009 OR 1-559-256-8000
23	500828	ASSY - CRANK ARM SET			
24	505050	BUCKLE - FRICTION BELT		(1)	NO LONGER USED
25	505058	WHEEL - 2 IN			
26	505063	PIN - HANDLEBAR-Ø1/4 X 1-3/4		(2)	REPLACE ITEMS 49 & 68 WITH ITEM 74
27	505068	BUSHING - 4 PIECE			
28	505173	STRAP - PEDAL			
29	505302	DECAL - WARNING-UPPER COVER			
30	505403	PEDAL SET - COMBO			
31	505408	SPRING - EXT-FRICTION BELT			
32	505417	SPROCKET - 16T FREEWHEEL			
33	505444	TOE CLIP AND STRAP ASSY			
34	505458	PAPER CLIP - JUMBO			
35	9279	SCREW - SBHTS-TF 5/16-18 X 3/4 ZP			
36	505473	DECAL - CAUTION-PEDAL TORQUE			
37	505480	RIVET - Ø1/4 X 3/4 REMOVABLE PL			
38	505495	WASHER - NYLON			
39	540800	ASSY - FLYWHEEL			
40	540803	ASSY - SHIFT CABLE			
41	540804	ASSY - FLYWHEEL-FREEWHEEL			
42	540809	SA - ICC & VIBRATION DAMPENER			
43	540815	ASSY - BASE FRAME			
44	540816	ASSY - LOOSE PARTS PACK-5421			
45	540826	SA - MAIN FRAME			
46	540827	SA - COVER-UPPER			
47	540829	SA - CRANK ARM-LH			
48	540903	WELDT - AXLE MOUNT			
49	504176	TUBE - SEA TPOST ADJ-SS (SEE NOTE 2)			
50	542020	COG - 16T			
51	543080	SPACER - BEARING-FLYWHEEL			
52	545002	SLUG - HANDLEBAR ADJ BR			
53	545051	COVER - CHAIN-OUTER			
54	545052	COVER - FLYWHEEL			
55	545054	COVER - MAIN FRAME-LOWER			
56	545055	ANCHOR - CABLE PL			
57	545057	O-RING - FLYWHEEL			
58	545058	PIN - MAIN FRAME-Ø1/4 X 2-1/8			
59	545059	O-RING - BOTTLE HOLDER-UPPER COVER			

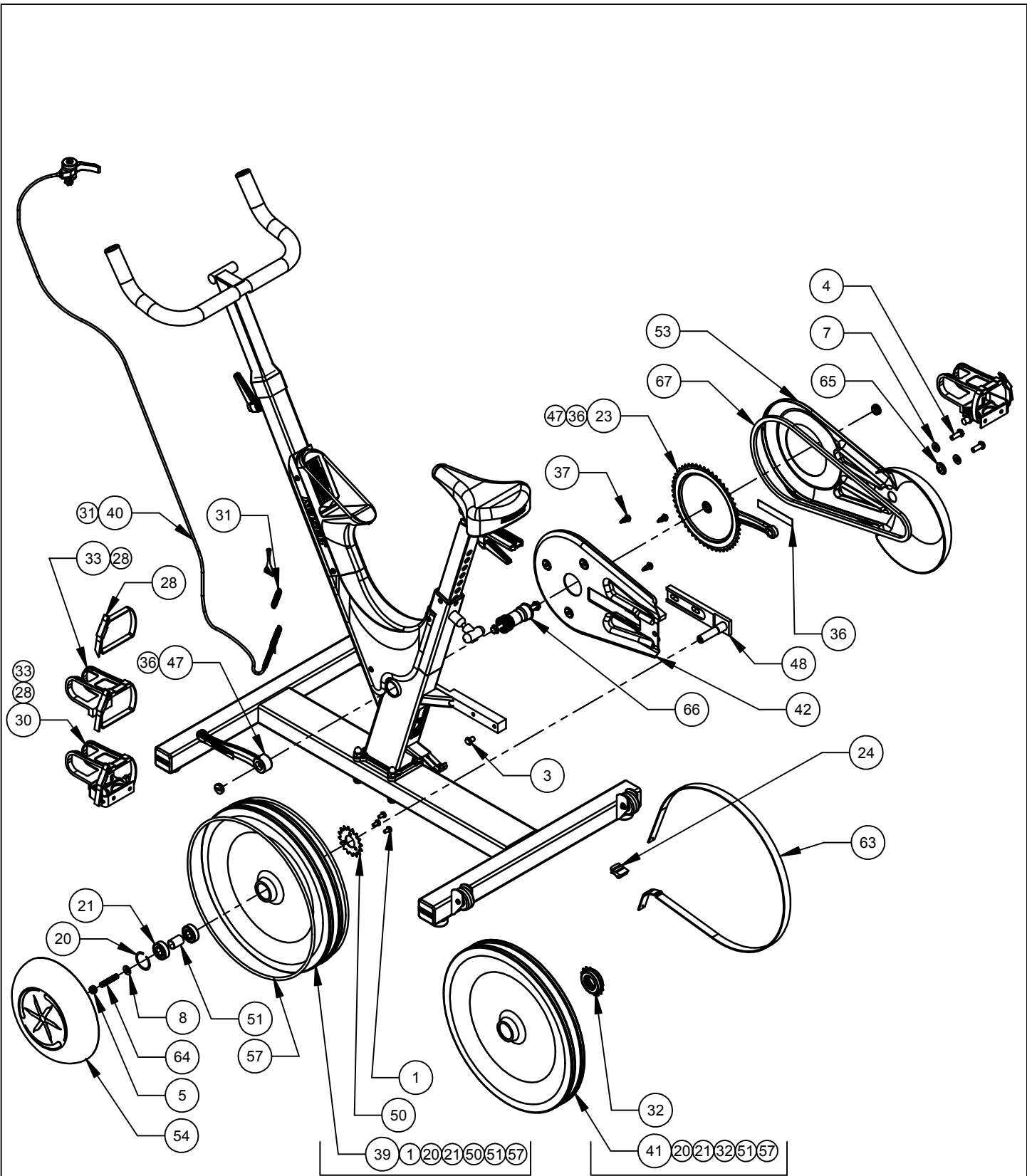
PRINTED ON: 9/6/2007

REV	<b>E</b>	RCD#:	<b>2555</b>	MODEL #:	<b>5421S &amp; 5461S</b>	TITLE:	<b>SA - RWD BIKE-FIXED GEAR &amp; FREEWHEEL</b>
FROM SERIAL NUMBER:	<b>5400041355</b>	TO:	<b>5400046480</b>	DATE FROM:	<b>3/3/04</b>	TO:	<b>12/29/04</b>





MODEL #:	<b>5421S &amp; 5461S</b>	TITLE:	<b>SA - RWD BIKE-FIXED GEAR &amp; FREEWHEEL</b>
FROM SERIAL NUMBER:	<b>5400046481</b>	DATE FROM:	<b>12/29/04</b>
TO:		TO:	___/___/___



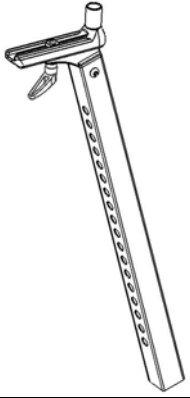
FIXED GEAR

FREEWHEEL

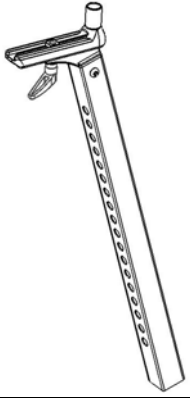
PRINTED ON: 4/11/2005

X:\drawings\REVISION\54\_RWD\_BIKE\

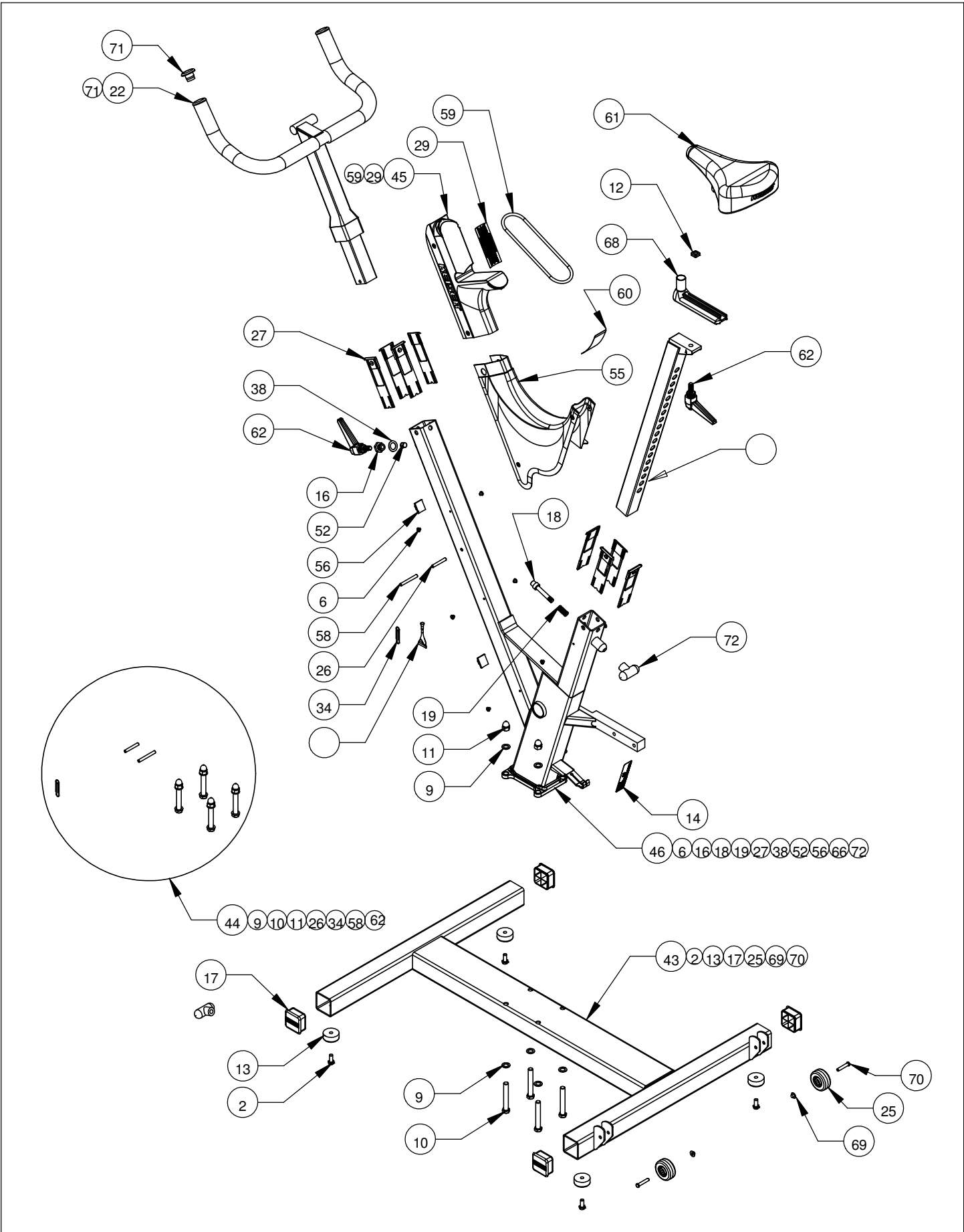
MODEL #:	<b>5421S &amp; 5461S</b>	TITLE:	<b>SA - RWD BIKE-FIXED GEAR &amp; FREEWHEEL</b>
FROM SERIAL NUMBER:	<b>5400046481</b>	DATE FROM:	<b>12/29/04</b>
TO:		TO:	___/___/___



ITEM 74  
REPLACES ITEMS  
49, 68

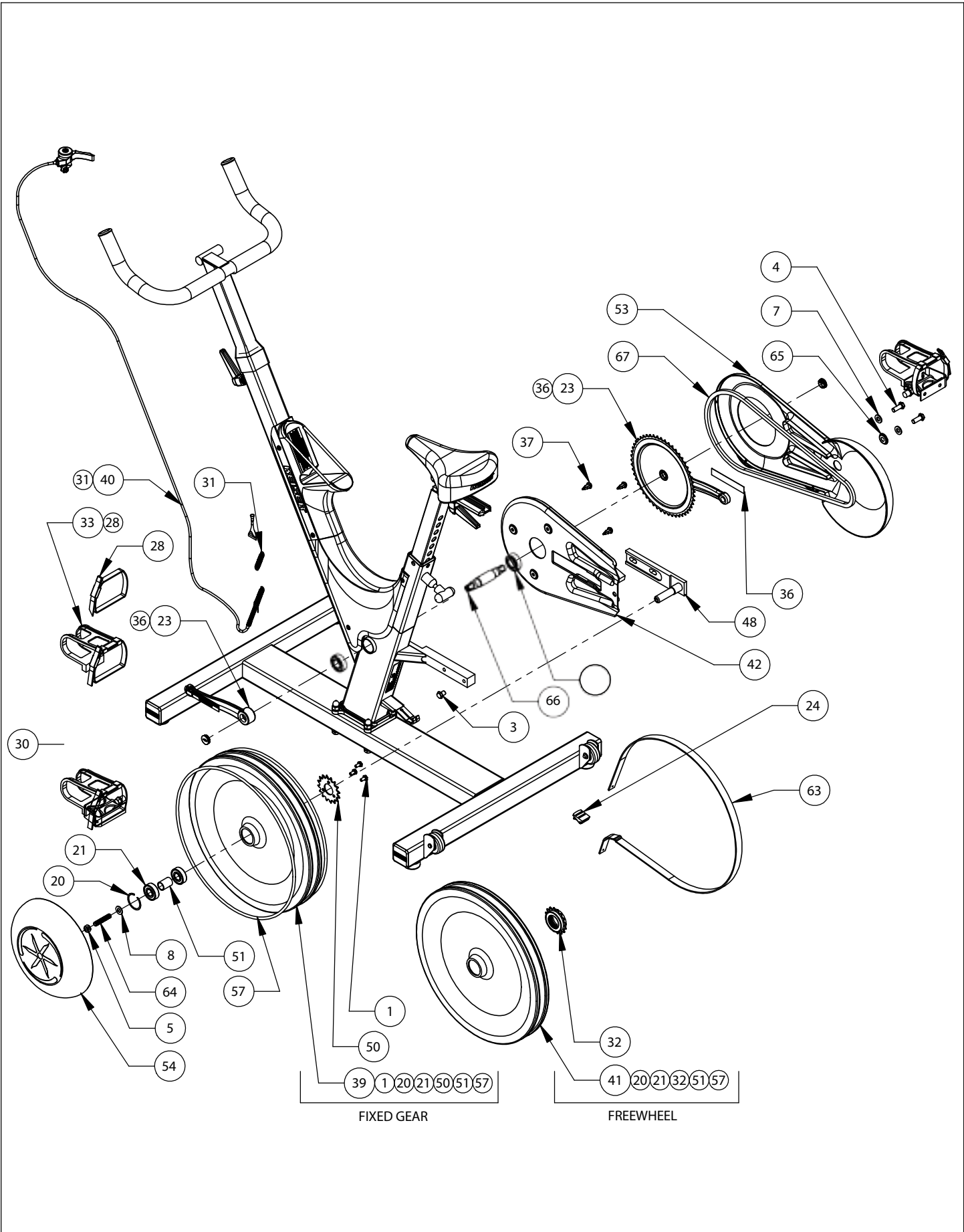




PRINTED ON: 1/4/2007

X:\drawings\\_APPROVED\54\_RWD\_BIKE

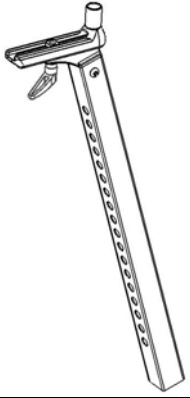
MODEL #: <b>5421S &amp; 5461S</b>	TITLE: <b>SA - RWD BIKE-FIXED GEAR &amp; FREEWHEEL</b>
FROM SERIAL NUMBER: <b>5400046481</b>	DATE FROM: <b>12/29/04</b>
TO:	TO: <b>___/___/___</b>



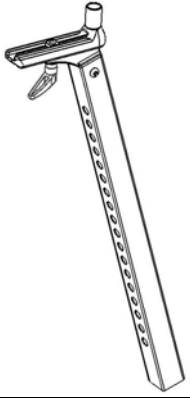
PRINTED ON: 1/4/2007

X:\drawings\\_APPROVED\54\_RWD\_BIKE\

FROM SERIAL NUMBER:	MODEL #: 5421S & 5461S	TITLE: SA - RWD BIKE-FIXED GEAR & FREEWHEEL
5400046481	TO:	DATE FROM: 12/29/04 TO: __/__/__

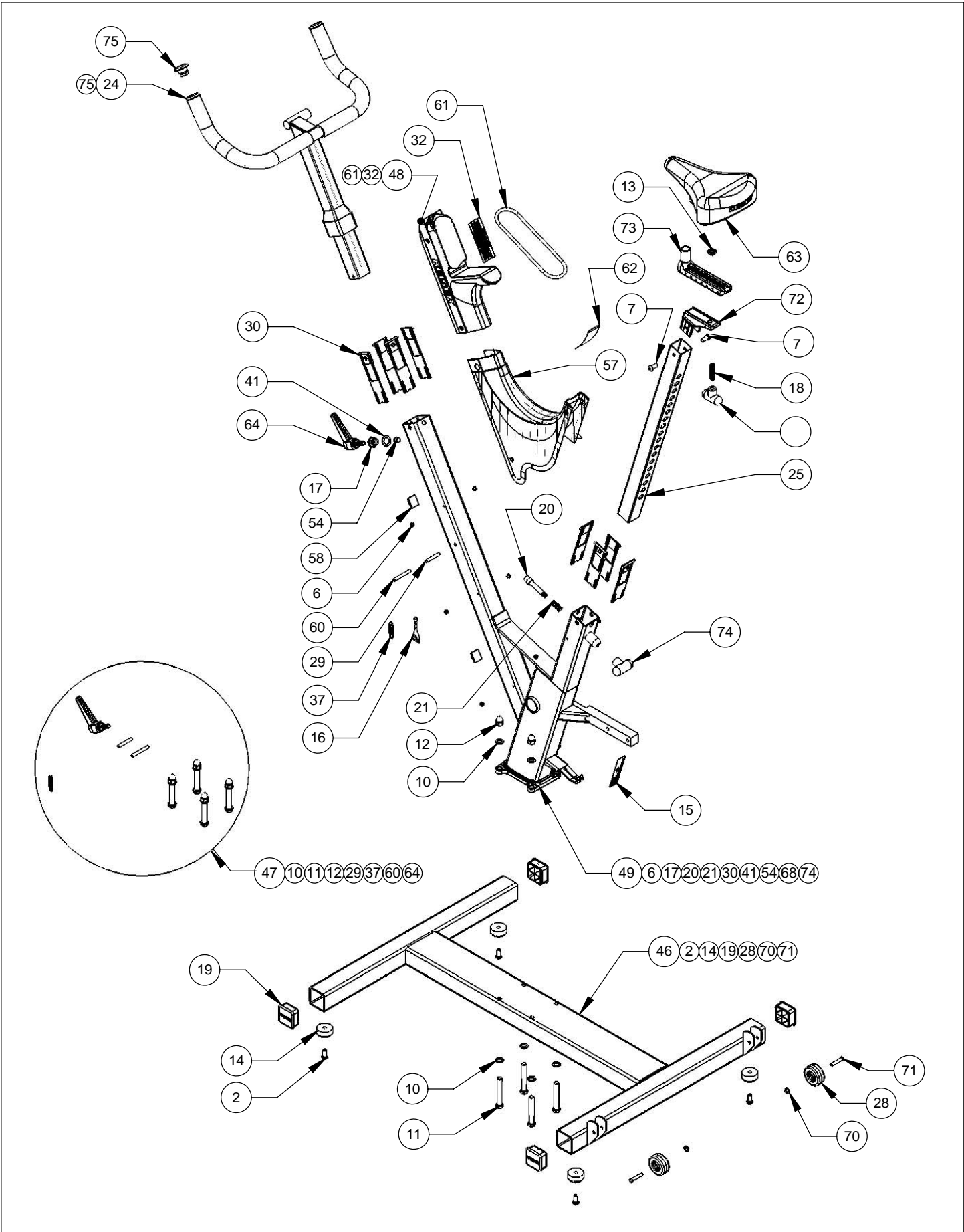


ITEM 73  
REPLACES ITEMS  
49, 68

 <p>ITEM 73 REPLACES ITEMS 49, 68</p>	



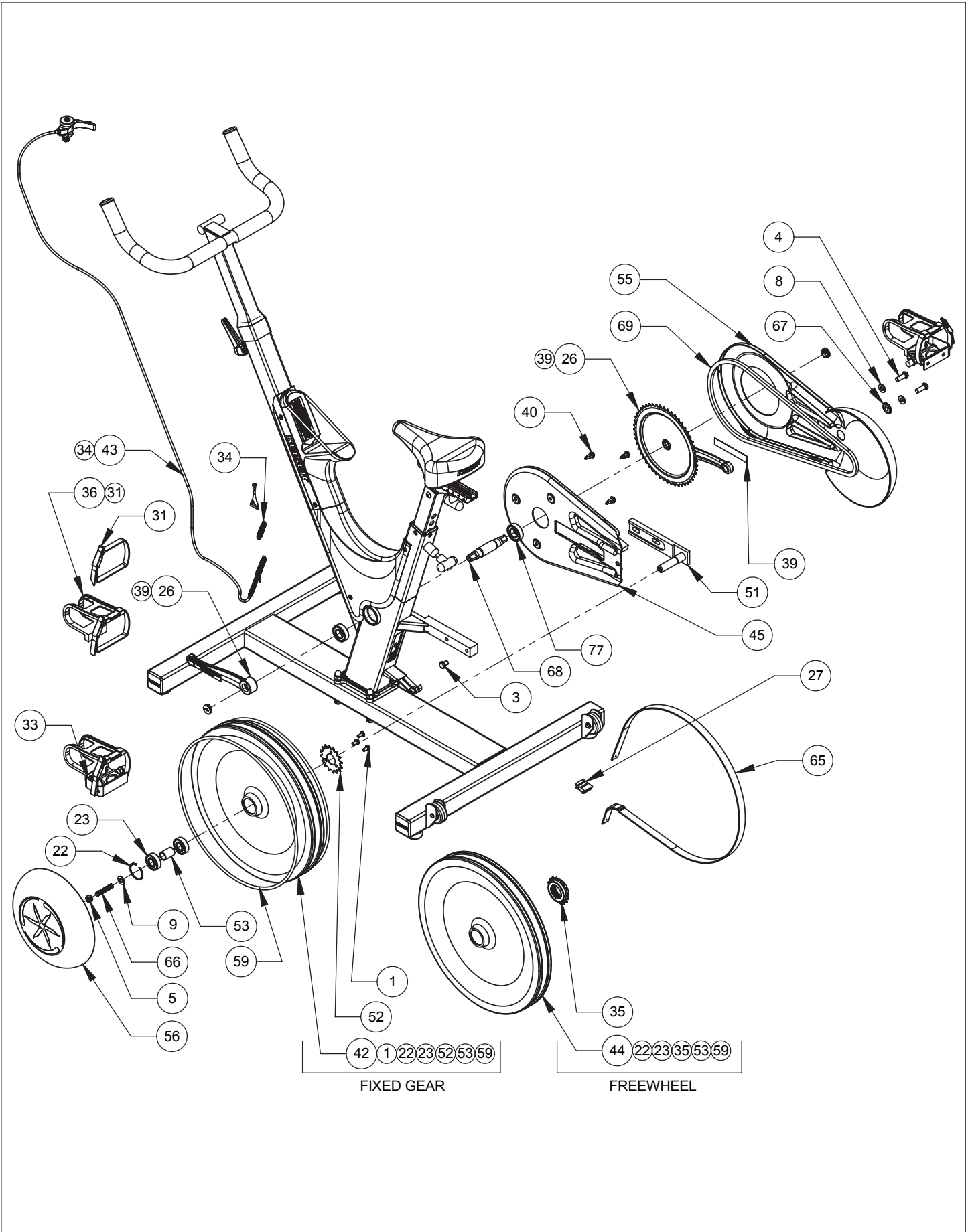




PRINTED ON: 8/2/2007

X:\drawings\\_REVISION\54\_RWD\_BIKE\

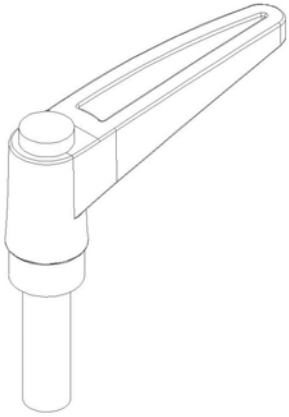
MODEL #: <b>5421S &amp; 5461S</b>		TITLE: <b>SA - RWD BIKE-FIXED GEAR &amp; FREEWHEEL</b>	
FROM SERIAL NUMBER: <b>060608-03024</b>	TO: <b>061018-06682</b>	DATE FROM: <b>06/08/06</b>	TO: <b>10/18/06</b>



PRINTED ON: 9/6/2007

X:\drawings\\_REVISION\54\_RWD\_BIKE\

MODEL #:	<b>5421S &amp; 5461S</b>	TITLE:	<b>SA - RWD BIKE-FIXED GEAR &amp; FREEWHEEL</b>	
FROM SERIAL NUMBER:	<b>060608-03024</b>	TO:	<b>061018-06682</b>	DATE FROM: <b>06/08/06</b> TO: <b>10/18/06</b>



ITEM 76  
REPLACES ITEM  
18